

Bahner Large Automatic Forming Machine Type 3-212

Forming Cones Type 212 /7 and Type 212 /8

Forming Cone Rotating Device Type 212 /9

Bahner Large Automatic Forming Machine Type 3-212

(Edition 12/2018)

Bahner



When designing this machine, we started from the pre-condition that it is of utmost importance for the user to receive a forming machine of high capacity, at a reasonable price. The subjectivity to repairs is very slight in spite of the extraordinarily bad environmental conditions under which this machine has to perform. Technical improvements were made only, where they were really useful and economical.

The outstanding attributes of our automatic large forming machine are its sturdy construction and excellent design. It is delivered completely ready for operation, with the script support built on, with lower part of the forming casing, and with exhaustor installed. The spraying mechanism is wind roller, and one feeder. The long feeding table is omitted. The machine spreads the hair very finely. The hair stuff flies on the forming cone evenly and loosened up. Thus, it can be fed stronger: the machine becomes more productive.

The forming casing is welded of rust- and acid-resistant steel sheet and is heated with steam – even on the doors. Thus, the inside of the casing does not get wet during spraying. If the forming department is climatized normally, electrical heating sticks can be omitted.

A flap installed in the forming casing – immediately in front of the exhaustor – automatically closes the suction during

exchange of the forming cones. This means an essential saving in strength.

The machine is driven by electric motors, for all 6 motors, for

1. The exhaustor
2. The upper picker roller and the wind roller
3. The lower picker roller
4. The gear (installed vertically, driving over V-belt and pinion), and
5. The feeding table, the draw-in rollers, and the wire sieve rollers (gear motor)
6. (the spraying valve)

Through this arrangement it is possible to have the individual drive groups start separately, over the switch box standing beside the machine.

As the flat belts are omitted, the rotating masses in the script support trestle are essentially decreased. The surrounding air is calmer. This design simplifies the operation of the machine considerably.

Switching devices permit the person who does the feeding as well as the one who does the forming, to start the machine and to stop it.

The fine flight of the hair stuff achieved through the extraordinarily precise construction of the machine, is bringing forms of good quality, what proves to be very advantageous during further processing.

Technical Data

Installed power	13,2 kW
Power consumption during operation	12,6 KW
Power consumption by spraying	12,6 KW
Upper Picker roller with wind roller	0,6 KW
Lower Picker roller	0,3 KW
Table Gear	0,25 KW
Draw-in rollers, feeding table, wire sieve roller	0,24 KW
Exhaustor	11 kW
spraying device	0,2 KW
Dimensions	
Lenght	3100 mm / 122,0 inch
Width	2500 mm / 98,4 inch
Height	2600 mm / 102,4 inch
Case seaworthy packed	
Feeder	2300 x 1620 x 1990 mm 90,6 x 63,8 x 78,4 inch
lower part for cone	1650 x 1350 x 1050 mm 65,0 x 53,2 x 41,3 inch
upper part for cone	1900 x 1720 x 2150 mm 74,8 x 67,7 x 84,6 inch
Exhaustor	1900 x 1250 x 1410 mm 74,8 x 49,2 x 55,5 inch
Weigth net	2700 kg / 1224,70 lbs
Weigth gross, seaworthy packed	3600 kg / 1632,93 lbs



Inside the balloon

Forming Cone Type 212 /7 and type 212 /8

Standard design made from rust- and acid-resistant steel sheet of material No. 1.4301.

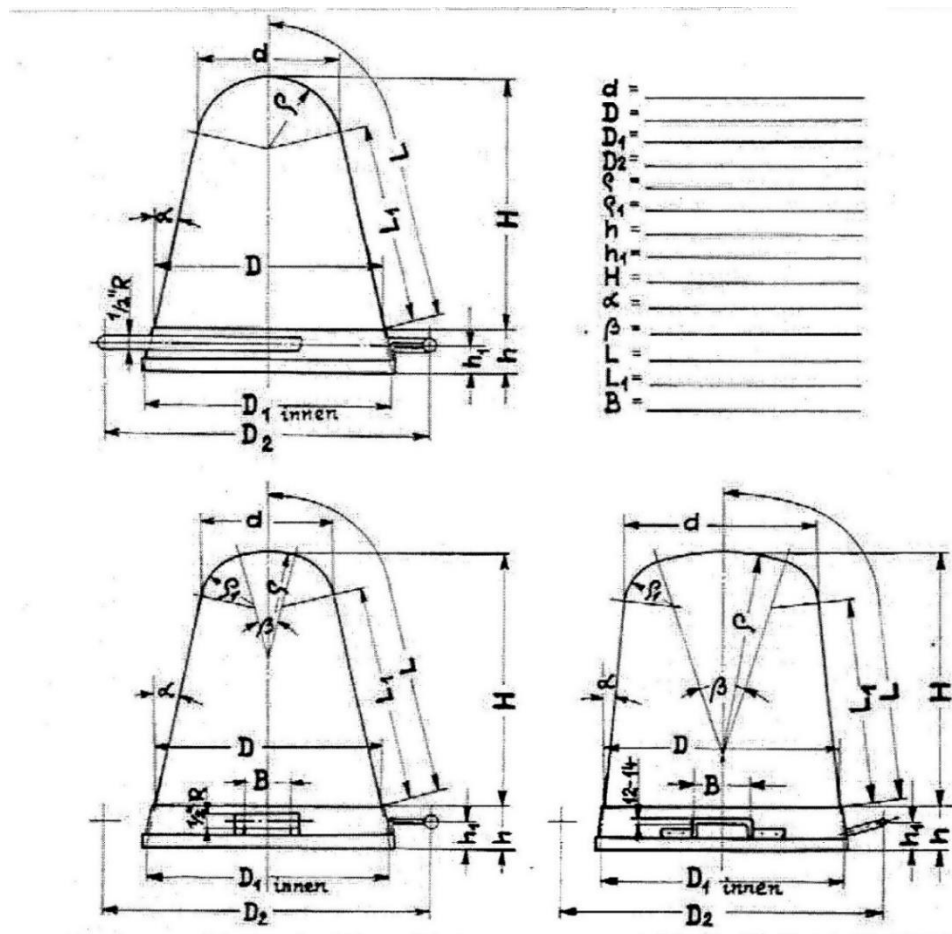
Sheet 1,0 mm thick, displaced perforation with round holes of 2,0 mms diameter, division 3,5 mms, the lower brim made from rust- and acid-resistant unperforated steel sheet 1,0 mm thick, the complete forming cone welded argonarc or pointed (protective gas welding), seams excellently ground and holes perforated equally.

Design 1: with one handle tube turning around the cone (see illustration 1) Type 212 /8

Design 2: with 2 handles (see Illustration 2 and 3) Type 212 /7

Please state the requested measurements in the sketches or send us your blue print or technical designs.





Forming Cone Rotating Device Type 9-212

The forming cones taken the Automatic Forming Machine are turned by hand, are hung up on a hanger and the hood are taken. The 2-times over turns of every forming cone recur with every hat body and are a heavy and repetitive task.

This always recurrent work of the rotation of the forming cones explains the forming cone rotating device Type 212 /9 mechanically and relieves thus the worker. It is simply inserted and reliable in service.

Those of the automatic forming machine Type 212 taken forming cone is inserted with the formed hood in the forming cone rotating device and is set in motion by pressing the start button.

The forming cone rotating device turns the forming cone about 180 degrees, so that it points upside down. The hood draws off the worker and gives by button pressure the

order for turning back of the forming cone. The empty forming cone is cleaned with the wet hand and is thereby moistened with water.

Moving the forming cone in legs directions occurs about a brake engine and is well positioned and free of vibration. The adjustment are fixed with adjustable position switches.

For this work with the Forming Cone Rotating Device the forming cones must be provided with circular handhold flange. The suspension device becomes after our Norm or on order also others measured explained.



Technical Data:

Height up to circular handhol flange	55 mm / 2,2 inch
Circular handhold flange external diameter	780 mm / 670 mm
	30,7 inch / 26,4 inch
Circular handhold flange pipe diameter	20 mm / 0,79 inch
Motor	0,4 kW
Measurements	
Lenght	750 mm / 29,5 inch
Width	800 mm / 31,5 inch
Height	740 mm / 29,1 inch
Measurements of case	
Lenght	900 mm / 35,4 inch
Width	1000 mm / 39,4 inch
Height	1000 mm / 39,4 inch
Weight net	105 kg / 47,63 lbs
Weight gross	180 kg / 81,65 lbs



Bahner